

Poland Municipal Center Master Plan

TOTAL PARKING SPACES PROVIDED: 120

November, 2013

PHASING RECOMMENDATIONS

1. Remove McConaghy house, driveway, and undesirable trees. Rough grade site, loam and seed.
2. Remove pavement at Town Hall. Shift entrance north and adjust parking & access aisle. Rough grade site, loam and seed, install walkways, trees, and amenities.
3. Develop/build-out Town Common with gazebo and pathways, followed by full amenities.
4. Develop new parking at library and Fairpoint. Interconnect parking areas and install amenities.
5. Develop trail head/trail system, larger park, and amphitheater.
6. Expand library.



gazebo



street trees - red or hybrid maple



picnic tables



amphitheater



benches



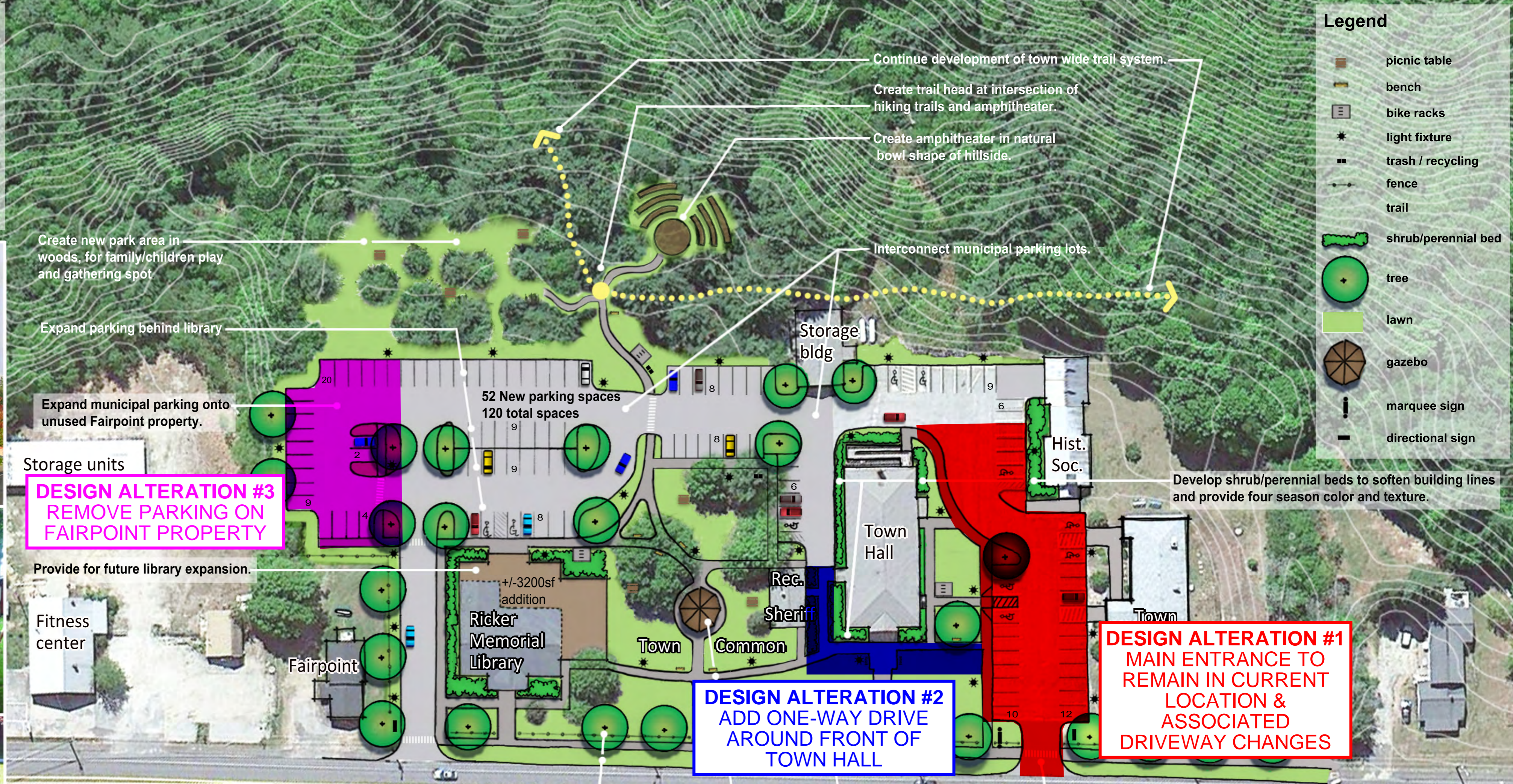
trash / recycling



bike racks



directional sign



**DESIGN ALTERATION #3
REMOVE PARKING ON
FAIRPOINT PROPERTY**

**DESIGN ALTERATION #2
ADD ONE-WAY DRIVE
AROUND FRONT OF
TOWN HALL**

**DESIGN ALTERATION #1
MAIN ENTRANCE TO
REMAIN IN CURRENT
LOCATION &
ASSOCIATED
DRIVEWAY CHANGES**



lighting



fence

